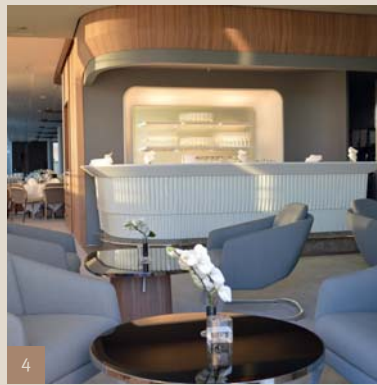


# ROOFGARDEN

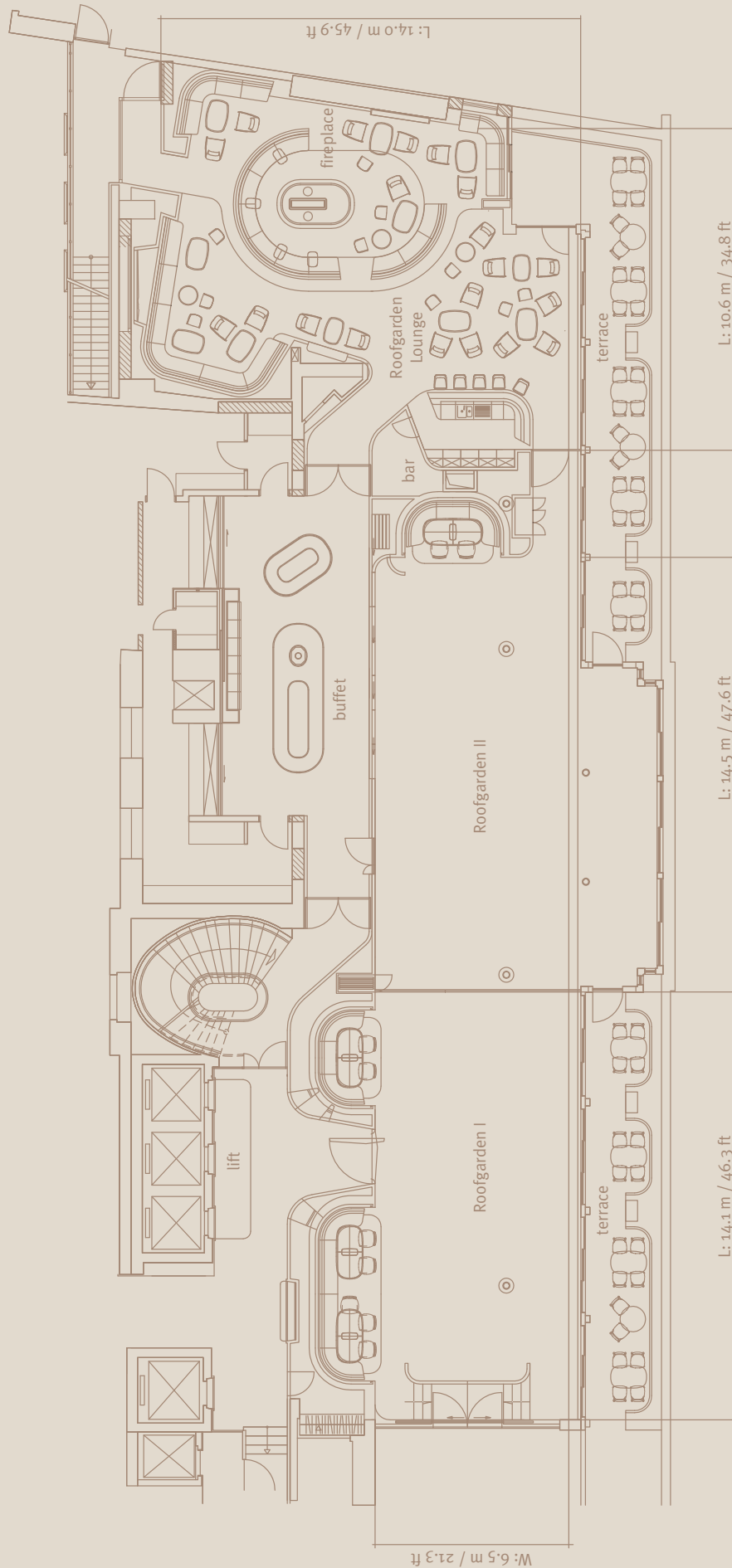


Led by the French design studio Jouin Manku the breakfast and function room, Roofgarden features a comprehensive re-design and was transformed into a new meeting hot spot: the breakfast buffet will offer an even wider range of products as well as an à-la-carte breakfast area. The addition of a modern lounge and bar area with an open fireplace offers also a large new event space merging with the Blue Spa Pool, Bar, Wintergarten and terrace - designed by André Putman - to form one unit.

Show kitchen and bar can be hired additionally upon request.

Dachgarten						
Rooms	L x W x H in m	Size in qm	Size in sqft	Daylight	Banquet	Niche seats
1 Roofgarden I	14.1 x 6.5 x 3.1	112	1,205.6	yes	64*	21
2 Roofgarden II	14.5 x 6.5 x 3.1	136	1,463.9	yes	92*	7
3 Roofgarden I and II	28.6 x 6.5 x 3.1	248	2,669.4	yes	156*	28
4 Roofgarden Lounge	10.6 x 14.0 x 3.1	118	1,270.1	yes	40**	-

\* Capacity without niche seats \*\* standard seating



**Hotel Bayerischer Hof**

Promenadeplatz 2-6  
80333 Munich, Germany

P.O.Box 100 253  
D-80076 Munich, Germany

Phone +49 89.21 20 - 0  
Fax + 49 89.21 20 - 906

[www.bayerischerhof.de](http://www.bayerischerhof.de)  
[info@bayerischerhof.de](mailto:info@bayerischerhof.de)

