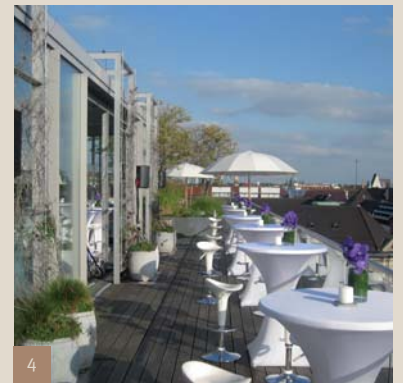
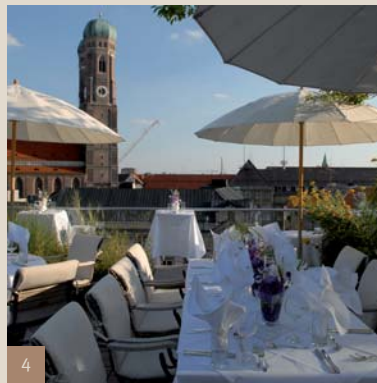


BLUE SPA

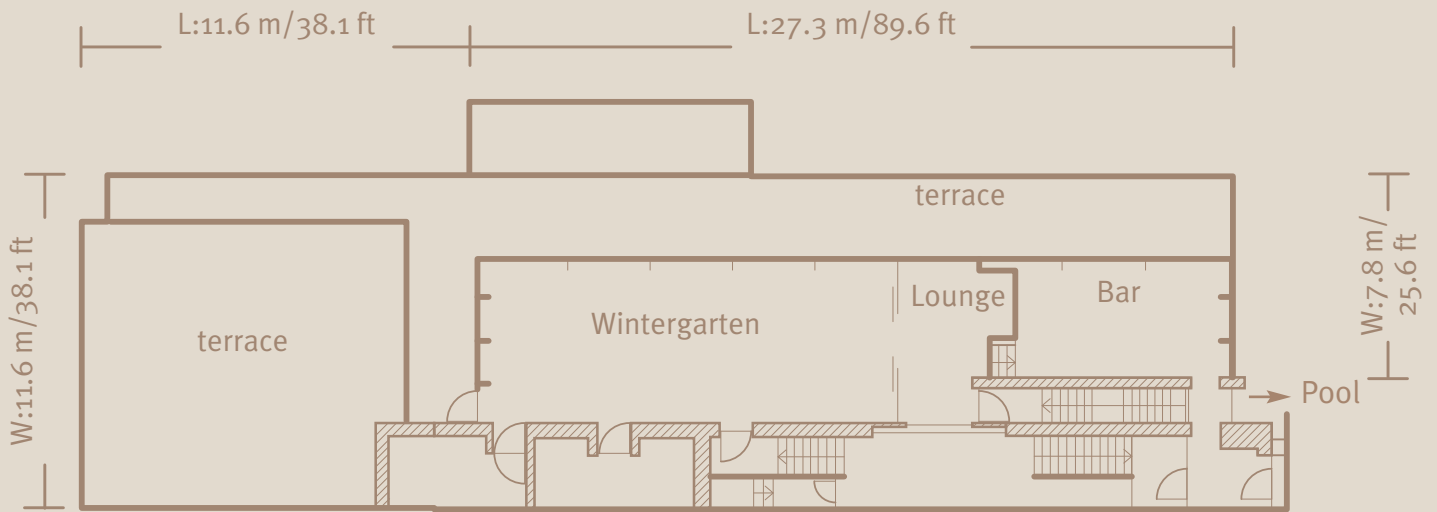


The Blue Spa area, designed by Andrée Putman, is located on the sixth floor of the hotel. With an open fireplace and a glass roof, that can be opened depending on the weather conditions, the pool area is offering a special atmosphere for pool parties, cocktail receptions and after work parties. The modern Blue Spa Wintergarten with free-standing fireplace is located on the seventh floor and is shining with its spacious glass front. For bigger occasions the pool area can be combined with the Blue Spa Bar & Lounge. Framed by sun decks and an idyllic ambience the Blue Spa terrace is giving a stunning view over the city.

Blue Spa												
Rooms	L x W x H in m	Size in sqm	Size in sqft	Daylight	Boardroom	U-shape	Cabaret	Classroom style	Banquet	Theater style	Reception	
1	Blue Spa Pool	24.3 x 14.2 x 2.8	203.1	2,186.2	yes	–	–	–	–	80	–	140/200*
2	Blue Spa Bar & Lounge	11.8 x 3.8 x 2.6	45.2	486.5	yes	–	–	–	–	–	–	20/40*
3	Blue Spa Wintergarten	15.1 x 5.8 x 3.1	84.6	910.6	yes	26	30	–	–	50	50	90
4	Blue Spa terrace complete	40.9 x 14.7	275.2	2,962.2	yes	–	–	–	–	70	–	–
	Blue Spa complete**	–	608.1	6,545.5	yes	–	–	–	–	–	–	500*

* including terrace ** 31+32+33+terrace

Blue Spa, 7th floor: 316.2 sqm / 3,403.5 sqft



Blue Spa Pool, 6th floor: 203.1 sqm / 2,186.2 sqft

