



CONFERENCES AND CELEBRATIONS



BAYERISCHER HOF



THE LOCATION: INCOMPARABLE. YOUR EVENT: UNFORGETTABLE.

WELCOME. For over 180 years, the Hotel Bayerischer Hof has been valued by its guests as a leading world-class luxury hotel. Ideally situated in the Old Town district of Munich, it is in direct proximity to the most important sights and exclusive boutiques. Which venue would be more suitable to provide an appropriate setting for your private or corporate event?

Choose from any of our 40 fully air-conditioned function rooms for 10 up to 2,500 guests, equipped with state-of-the-art conference technology. You will find the right surroundings for every occasion: from the impressive ballroom ensemble to the classical rooms in the historical Palais Montgelas, which have been extensively renovated in 2020 by the Belgian interior designer and art dealer Axel Vervoordt, to the Roof Garden with its magnificent view of

the towers of the Frauenkirche. Our very own in-house cinema with state-of-the-art image and sound control, offers various options for your event. In addition, the hotel's five restaurants and six bars are available for exclusive use.

Our team of conference and banqueting specialists is always at hand to help you plan your event, offering individual suggestions and creative ideas. They will make sure that creating a successful event at the Hotel Bayerischer Hof will be an experience, as enjoyable as the event itself.

In this brochure we have compiled an overview of our function rooms for you. For more detailed information, please contact our banqueting team or visit our website at www.bayerischerhof.de.



THE BALLROOM

Whether it's a grand ball, a festive banquet, an international congress or a successful conference, this is where society meets. The light-flooded Ballroom appears in Art Decó style. Curved staircases, stately galleries and the terrific stage fit

in the overall picture. Enjoy the skies over Munich, in the middle of our Ballroom. The unique glass roof construction can be opened in minutes to transform your event into a spectacular open air sensation.

THE BALLROOM ENSEMBLE

All together, the adjoining rooms assemble to a spacious and spectacular hall: the Ballroom Ensemble. The Cocktail Lounge impresses with its elegant charm. In the Atrium – the centrepiece of the hotel – a glass dome rises 8.5 metres

above the floor. The 3.5 metre high fireplace is the eye-catcher of the Fireplace Lounge. One of the most modern bars in town can be found in the listed hall of mirrors from the year 1841 – the falk's Bar.

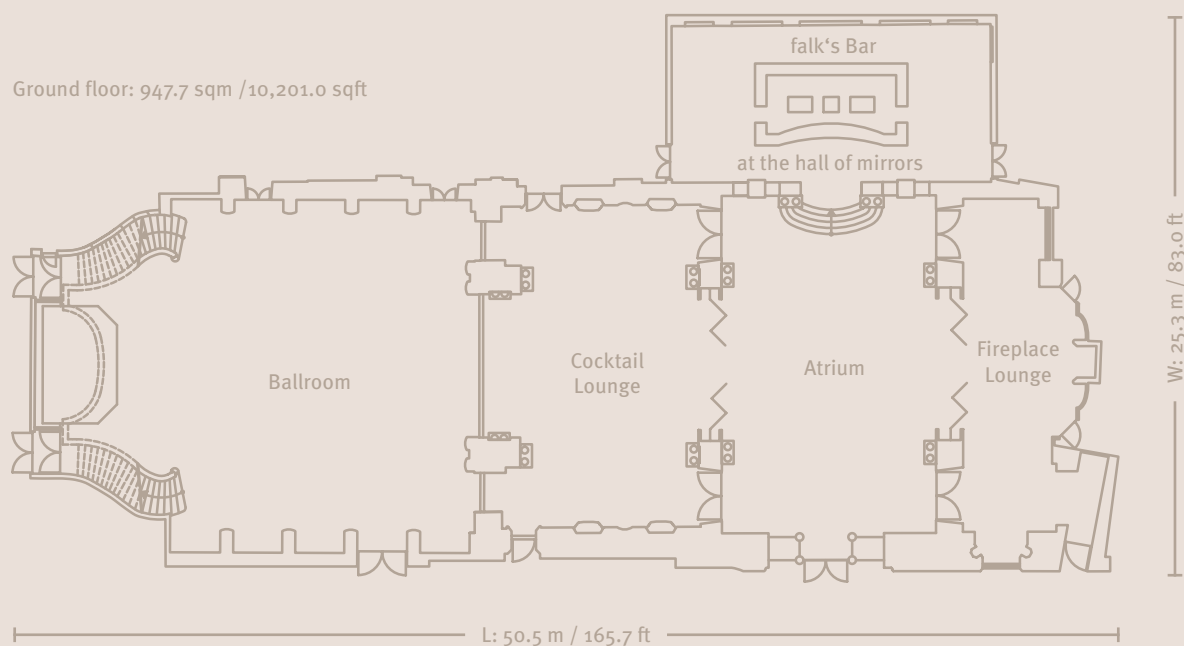


| Ballroom Ensemble | | | | | | | | | | | | |
|-------------------|--------------------------------------|-------------------|----------------|-----------------|---------------|-----------|---------|---------|-------------------------|---------|------------------|-----------|
| | Rooms | L x W x H in m | Size in sqm | Size in sqft | Day- light | Boardroom | U-shape | Cabaret | Class- room style | Banquet | Theatre style | Reception |
| 1 | Ballroom gr.floor | 21.3 x 16.5 x 8.7 | 353.1 | 3,800.7 | yes | 96 | 54 | 140 | 188 | 220 | 447 | 400 |
| 2 | Ballroom tier I | – | 185.0 | 1,991.3 | yes | – | – | – | – | – | 110 | 150 |
| 3 | Ballroom tier II | – | 140.6 | 1,513.4 | yes | – | – | – | – | – | 100 | – |
| 4 | Cocktail Lounge | 16.9 x 12.0 x 3.9 | 170.7 | 1,837.4 | no | 36 | 41 | 70 | 80 | 150 | 160 | 200 |
| | Ballroom complete* | – | 849.4 | 9,142.9 | yes | – | – | – | 268 | 370 | 817 | 750 |
| 5 | Atrium | 17.2 x 11.2 x 5.4 | 191.3 | 2,059.1 | yes | 36 | 44 | 70 | 112 | 140 | 160 | 230 |
| 6 | Fireplace Lounge | 4.6 x 19.0 x 4.0 | 106.1 | 1,142.1 | no | 18 | – | – | – | 60 | – | 80 |
| 7 | Gallery I | 4.1 x 7.2 x 2.3 | 65.5 | 705.0 | yes | 18 | – | – | 12 | 30 | 30 | 50 |
| 8 | Gallery II | 14.0 x 11.3 x 2.3 | 158.2 | 1,702.9 | yes | 32 | 31 | 70 | 72 | 120 | 120 | 140 |
| 9 | falk's Bar at the hall of mirrors | 16.1 x 7.6 x 4.6 | 126.5 | 1,361.6 | no | – | – | – | – | – | – | 120 |
| | Ballroom Ensemble complete** | – | 1,497.0 | 16,113.6 | yes | – | – | 350 | 464 | 720 | 1127 | 1370 |
| 10 | Emporen Parlour | 7.5 x 6.2 x 2.3 | 44.7 | 481.1 | no | 8 | – | – | – | 10 | – | – |
| 11 | Komödie im Bayerischen Hof (theatre) | – | 311.2 | 3,349.7 | no | – | – | – | – | – | 570 | 570 |

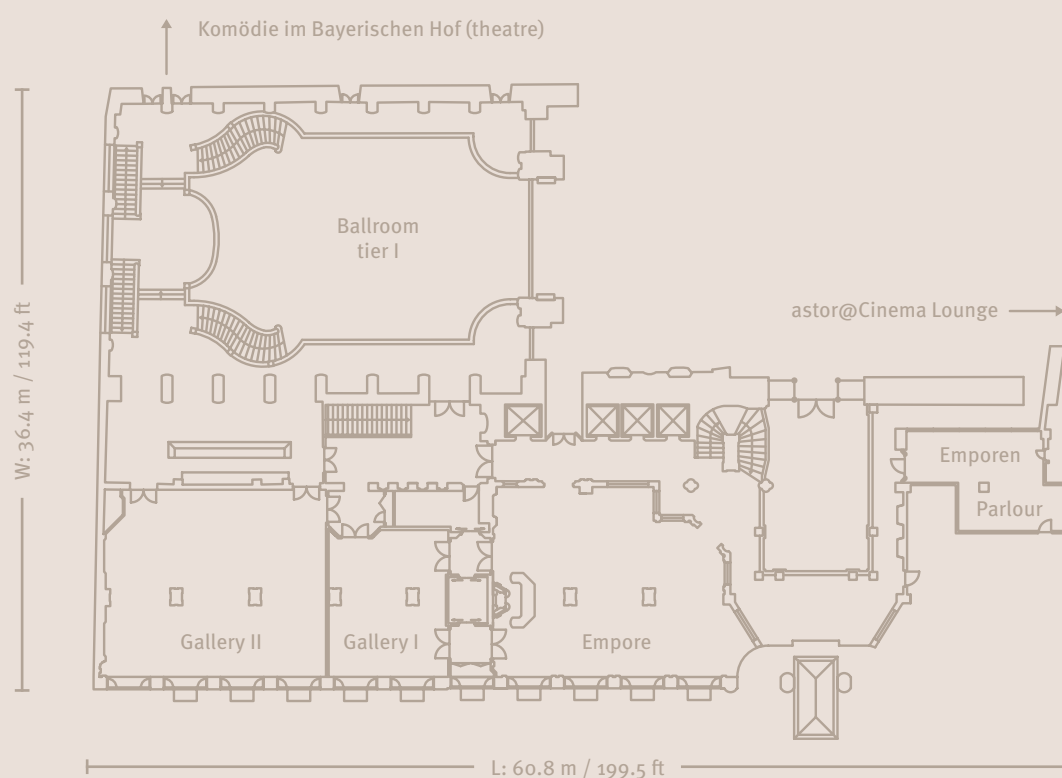
* 1+2+3+4 ** 1+2+3+4+5+6+7+8+9
Seating including standard stage (6m x 4m)

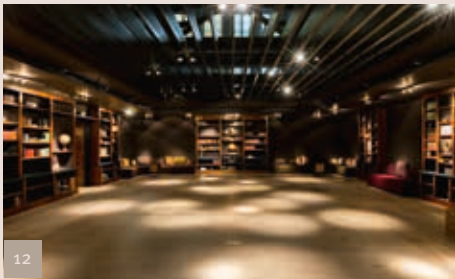
Technical details of the ballroom

- Height 8.7 metres
- Glass roof 10.5 x 8.5 metres, can be opened on both sides in 2 minutes
- 16 suspension points for a total of max. two tons weight
- Can be completely darkened
- Focussed lighting by means of 36 moving lights in all colours
- 14 video beamers project running films and pictures onto the hall walls on request
- Optimal acoustics thanks to a Bose loud speaker system
- 2 galleries with connection to further function rooms
- Hoist gates extend the ballroom to a Ballroom Ensemble with around 1,500 sqm / 16,145.87 sqft
- Flexible stage (height up to 1m, size up to 70 sqm / 753.5 sqft)



Mezzanine

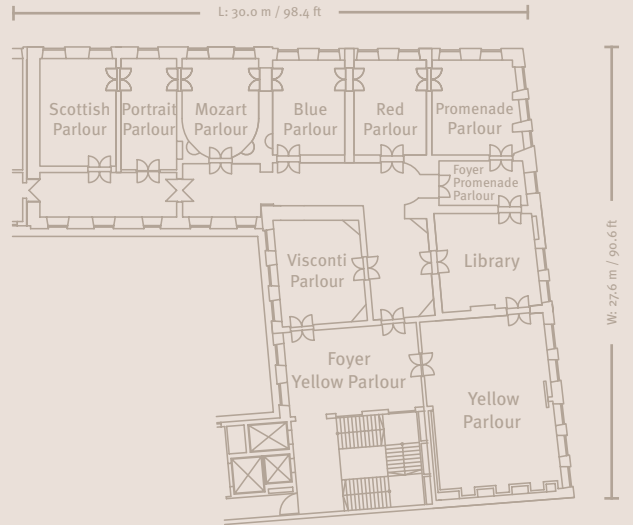
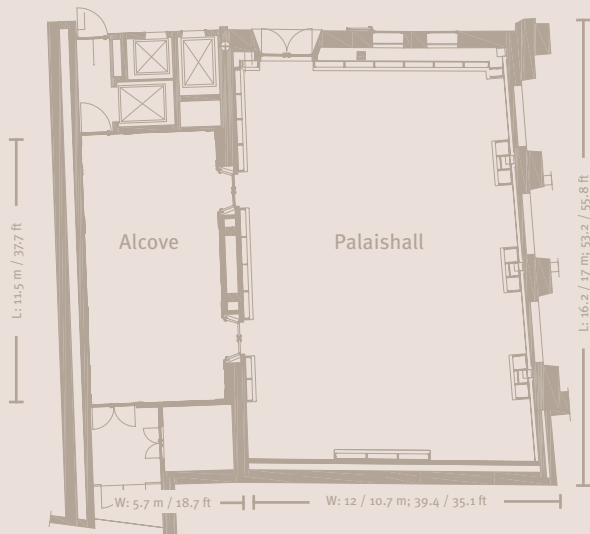




Alcove: 63 sqm / 678.1 sqft
H: 2.9 m / 9.5 ft

Palaishall: 185 sqm / 1991.3 sqft
H: 3.1 m / 10.2 ft

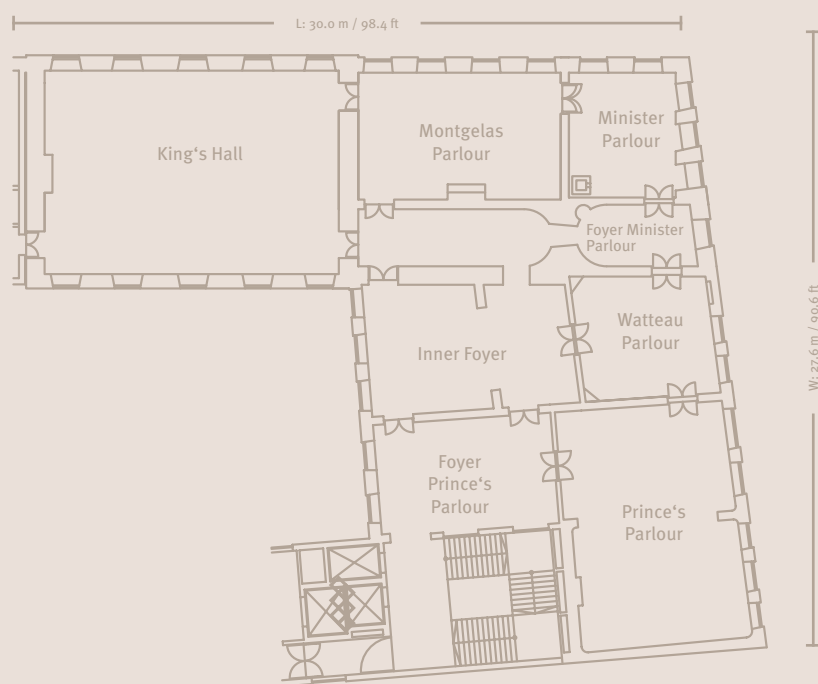
Palais Montgelas, 1st floor: 448.6 sqm / 4,828.7 sqft



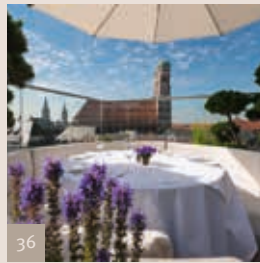
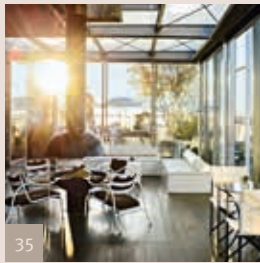
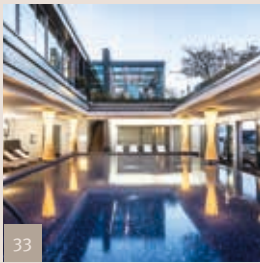
| Palais Montgelas ground floor and 1st floor | | | | | | | | | | | | |
|---|-------------------|----------------|-----------------|----------|-----------|---------|---------|--------------------|---------|------------------|-----------|--|
| Rooms | L x W x H in m | Size in sqm | Size in sqft | Daylight | Boardroom | U-shape | Cabaret | Classroom style | Banquet | Theatre style | Reception | |
| 12 Palaishall | 16.2 x 10.7 x 3.1 | 185.0 | 1,991.3 | yes | 34 | 50 | 72 | 112 | 144 | 260 | 260 | |
| 13 Alcove | 11.5 x 5.7 x 2.9 | 63.0 | 678.1 | no | 26 | — | — | — | 30 | — | 50 | |
| 14 Yellow Parlour | 10.9 x 8.3 x 3.4 | 85.8 | 923.5 | yes | 26 | 33 | 35 | 52 | 60 | 70 | 70 | |
| 15 Library | 6.4 x 5.6 x 3.6 | 35.7 | 384.3 | yes | 12 | 15 | — | — | 16 | 20 | 25 | |
| 16 Promenade Parlour | 6.1 x 5.3 x 3.5 | 32.8 | 353.1 | yes | 12 | 15 | — | — | 16 | 16 | 20 | |
| 17 Red Parlour | 6.1 x 5.3 x 3.5 | 28.4 | 305.7 | yes | 10 | — | — | — | 10 | 18 | — | |
| 18 Blue Parlour | 6.1 x 4.7 x 3.5 | 28.4 | 305.7 | yes | 10 | — | — | — | 10 | 18 | — | |
| 19 Mozart Parlour | 6.3 x 5.0 x 3.5 | 28.8 | 310.0 | yes | 10 | — | — | — | 10 | 18 | — | |
| 20 Portrait Parlour | 7.2 x 3.6 x 3.5 | 25.8 | 277.7 | yes | 10 | — | — | — | 10 | 12 | — | |
| 21 Scottish Parlour | 7.0 x 4.9 x 3.5 | 34.3 | 369.2 | yes | 14 | — | — | — | 16 | 20 | — | |
| 22 Visconti Parlour | 6.3 x 5.6 x 3.6 | 33.9 | 364.9 | yes | 14 | 15 | — | — | 16 | 20 | 20 | |



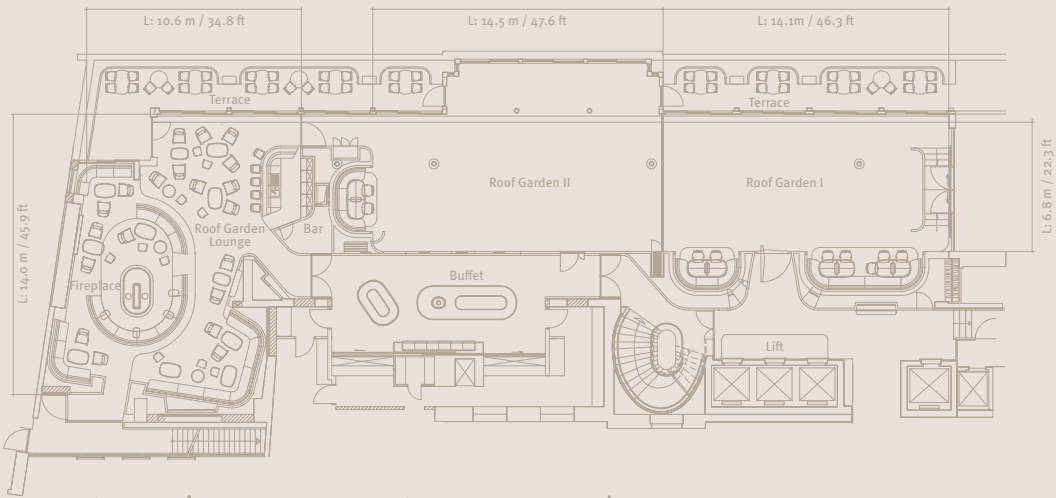
Palais Montgelas, 2nd floor: 514.5 sqm / 5,538.0 sqft



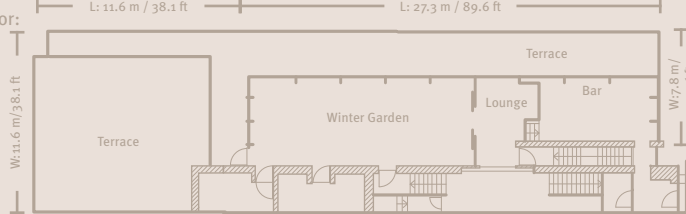
| Palais Montgelas 2nd floor | | | | | | | | | | | | |
|----------------------------|-------------------|----------------|-----------------|----------|-----------|---------|---------|--------------------|---------|------------------|-----------|--|
| Rooms | L x W x H in m | Size in sqm | Size in sqft | Daylight | Boardroom | U-shape | Cabaret | Classroom style | Banquet | Theatre style | Reception | |
| 23 Prince's Parlour | 11.8 x 8.2 x 3.6 | 95.5 | 1,028.0 | yes | 28 | 33 | 35 | 52 | 60 | 80 | 70 | |
| 24 Watteau Parlour | 6.5 x 5.8 x 3.4 | 36.6 | 394.0 | yes | 12 | 15 | — | — | 16 | 20 | 25 | |
| 25 Minister Parlour | 6.1 x 5.2 x 4.7 | 31.8 | 342.3 | yes | 12 | 15 | — | — | 16 | 16 | 25 | |
| 26 King's Hall | 14.1 x 9.9 x 6.0 | 154.6 | 1,664.1 | yes | 32 | 40 | 70 | 112 | 120 | 160 | 150 | |
| 27 Montgelas Parlour | 9.9 x 6.1 x 4.7 | 59.6 | 641.5 | yes | 24 | 22 | 21 | 28 | 40 | 40 | 50 | |
| 28 Inner Foyer | 9.9 x 6.2 x 3.4 | 55.2 | 594.2 | yes | — | — | — | — | — | — | 50 | |



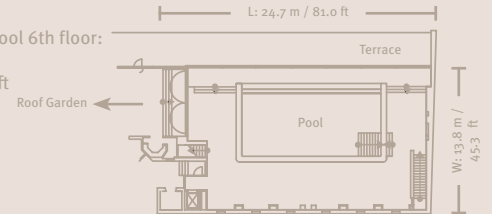
Roof Garden 6th floor:
366 sqm
3,939.5 sqft



Blue Spa 7th floor:
316.2 sqm
3,403.5 sqft



Blue Spa Pool 6th floor:
203.1 sqm
2,186.2 sqft



| Roof Garden / Blue Spa | | | | | | | | | | | | |
|------------------------------|-------------------|----------------|-----------------|----------|-----------|---------|---------|--------------------|---------|------------------|----------------|--|
| Rooms | L x W x H in m | Size in sqm | Size in sqft | Daylight | Boardroom | U-shape | Cabaret | Classroom style | Banquet | Theatre style | Recep- tion | |
| 29 Roof Garden I | 14.1 x 6.8 x 2.6 | 112.0 | 1,205.6 | yes | 29 | 32 | — | 45 | 64 | 72 | 70 | |
| 30 Roof Garden II | 14.5 x 6.8 x 2.6 | 136.0 | 1,463.9 | yes | 31 | 34 | — | 58 | 86 | 104 | 90 | |
| 31 Roof Garden I and II | 28.6 x 6.8 x 2.6 | 248.0 | 2,669.4 | yes | — | — | — | 103 | 150 | 192 | 160 | |
| 32 Roof Garden Lounge | 10.6 x 14.0 x 3.1 | 118.0 | 1,270.1 | yes | — | — | — | — | — | — | 80 | |
| 33 Blue Spa Pool | 24.7 x 13.8 x 2.8 | 203.1 | 2,186.2 | yes | — | — | — | — | 80 | — | 140/200* | |
| 34 Blue Spa Bar & Lounge | 11.8 x 3.8 x 2.6 | 45.2 | 486.5 | yes | — | — | — | — | — | — | 20/40* | |
| 35 Blue Spa Winter Garden | 15.1 x 5.8 x 3.1 | 84.6 | 910.6 | yes | 26 | 30 | — | — | 50 | 50 | 90 | |
| 36 Blue Spa Terrace complete | 40.9 x 14.7 | 275.2 | 2,962.2 | yes | — | — | — | — | 70 | — | — | |
| Blue Spa complete** | — | 608.1 | 6,545.5 | yes | — | — | — | — | — | — | 500* | |

* capacity including terrace ** 33+34+35+36



37



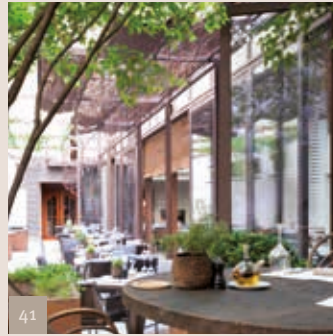
39



38



39

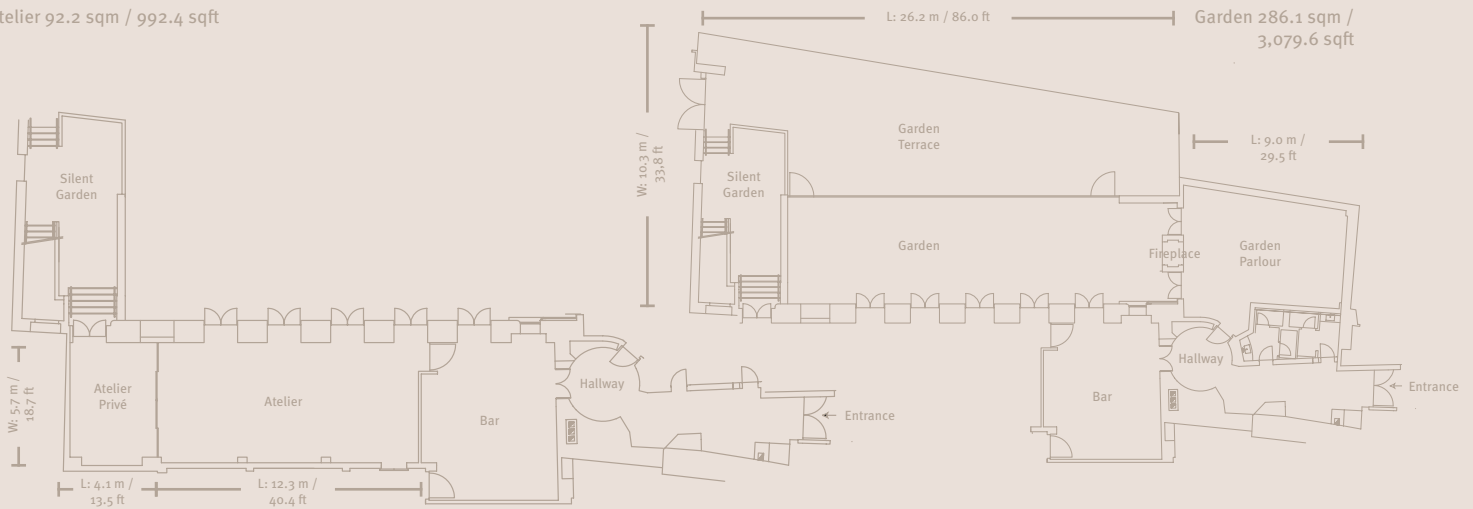


41



40

Atelier 92.2 sqm / 992.4 sqft



| Restaurants: Garden / Atelier | | | | | | | | | | | | |
|-------------------------------|------------------|-------------|--------------|----------|-----------|---------|---------|-----------------|---------|---------------|-----------|--|
| Rooms | L x W x H in m | Size in sqm | Size in sqft | Daylight | Boardroom | U-shape | Cabaret | Classroom style | Banquet | Theatre style | Reception | |
| 37 Atelier Restaurant | 12.3 x 5.7 x 2.5 | 70.1 | 754.6 | indirect | 18 | — | — | — | 30 | — | — | |
| 38 Atelier Privé | 4.1 x 5.4 x 2.5 | 22.1 | 237.9 | yes | 10 | — | — | — | 10 | — | — | |
| 39 Garden Restaurant | 21.4 x 5.6 x 4.3 | 119.8 | 1,289.5 | yes | 30 | — | — | — | 54 | — | — | |
| 40 Garden Parlour | 9.0 x 4.8 x 2.4 | 43.2 | 465.0 | indirect | 24 | — | — | — | 26 | — | — | |
| 41 Garden Terrace | 26.2 x 4.7 | 123.1 | 1,325.0 | yes | — | — | — | — | 33 | — | — | |



42



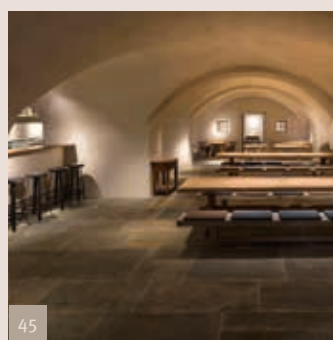
46



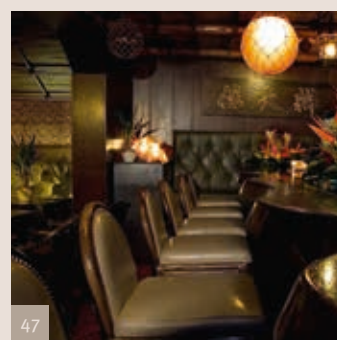
43



44



45



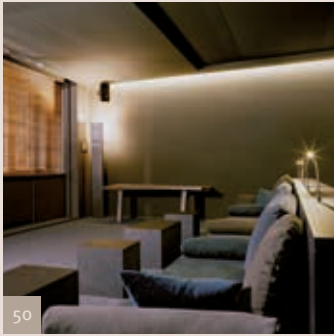
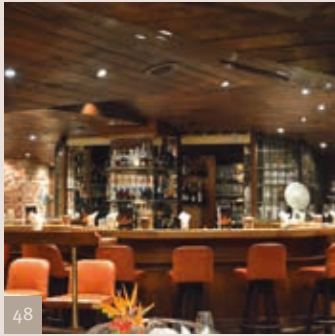
47



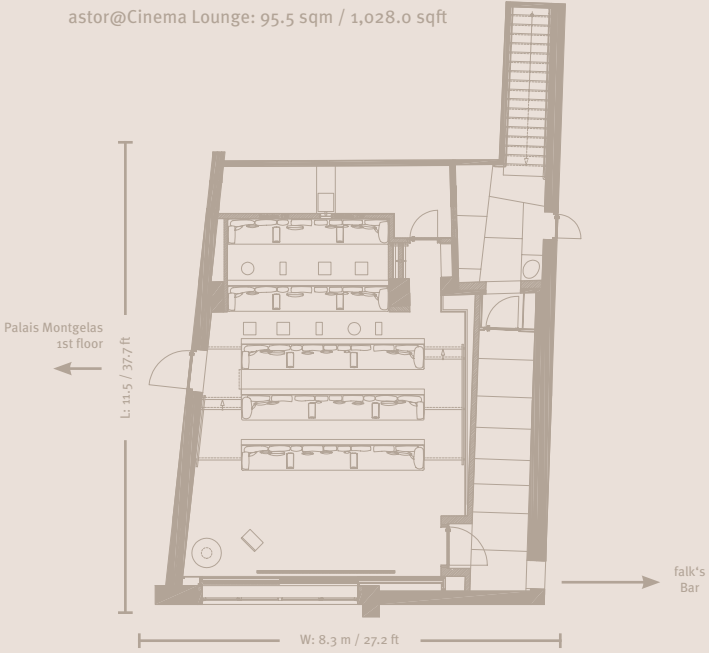
Restaurants: Palais Keller / Trader Vic's

| Rooms | L x W x H in m | Size in sqm | Size in sqft | Daylight | Boardroom | U-shape | Cabaret | Class- room style | Banquet | Theatre style | Reception |
|-----------------------------|-------------------|----------------|-----------------|----------|-----------|---------|---------|-------------------------|---------|------------------|-----------|
| 42 Refektorium | 15.8 x 6.5 x 3.0 | 93.3 | 1,004.3 | no | 28 | — | — | — | 44 | — | 60 |
| 43 Palais Stube | 13.5 x 5.9 x 2.8 | 79.7 | 857.9 | no | 26 | — | — | — | 60 | — | 80 |
| 44 Tiroler Stube | 5.1 x 3.8 x 2.2 | 17.6 | 189.4 | no | — | — | — | — | 18 | — | — |
| 45 Palais Keller & Schwemme | 23.6 x 9.3 x 3.0 | 169.5 | 1,824.5 | no | — | — | — | — | 78 | — | 100 |
| 46 Trader Vic's | 43.4 x 23.9 x 2.9 | 623.5 | 6,711.3 | no | — | — | — | — | 256 | — | — |
| 47 Menehune Bar | 7.5 x 3.5 x 2.5 | 27.5 | 296.0 | no | — | — | — | — | 18 | — | — |

* without kitchen and bakery



astor@Cinema Lounge: 95.5 sqm / 1,028.0 sqft



| Night Club / astor@Cinema Lounge | | | | | | | | | | | | |
|----------------------------------|-------------------|----------------|-----------------|----------|-----------|---------|---------|--------------------|---------|------------------|-----------|--|
| Rooms | L x W x H in m | Size in sqm | Size in sqft | Daylight | Boardroom | U-shape | Cabaret | Classroom style | Banquet | Theatre style | Reception | |
| 48 Night Club* | 17.2 x 14.9 x 3.2 | 304.0 | 3,272.2 | no | — | — | — | — | 125** | — | — | |
| 49 Piano Bar | 12.5 x 4.9 x 2.4 | 61.3 | 659.8 | no | — | — | — | — | 42** | — | 50 | |
| 50 astor@Cinema Lounge | 11.5 x 8.3 x 2.8 | 95.5 | 1,028.0 | yes | — | — | — | — | — | 38 | — | |

* including Piano Bar ** standard seating

HOTEL BAYERISCHER HOF AT A GLANCE.

The moment you enter our hotel you will become aware of two things: firstly the atmosphere of a leading world-class luxury hotel. But you will notice something else, too: we are genuinely delighted that you have chosen to stay with us. The Hotel Bayerischer Hof has been owned and run by the Volkhardt family since 1897. In other words: hospitality has a long tradition with us, that might be the reason why the hotel has won a lot of excellent awards.

| | |
|-----------------|--|
| Guest rooms: | 337 rooms including 74 suites Individually decorated in various styles and luxuriously equipped South and north wing with 28 Deluxe double rooms and Junior suites as well as the 350sqm Penthouse Garden Suite and the Panorama Suite 7, designed by Axel Vervoordt. Spacious suite ensembles on the Panorama floor and in the historical Palais Montgelas Highspeed internet access via WLAN / LAN Air-condition and multimedia-TV with more than 300 international channels, pay TV |
| Restaurants | Atelier: 2 Michelin Star restaurant with finest seasonal culinary creations Garden with summer terrace: Classics and contemporarily interpreted cuisine Palais Keller: Historical vault with Bavarian specialties and its own bakery Trader Vic's: Polynesian specialties prepared from the beech wood oven according to original recipes Blue Spa Lounge with winter garden and terrace: Light wellness cuisine above the rooftops |
| Bars: | falk's Bar: Modern, award-winning bar in the historical mirror hall Trader Vic's Bar and Menehune Bar: Legendary cocktails in exotic ambiance Blue Spa Bar: Cool drinks and astonishing views over the historic city centre Night Club and Piano Bar: Cocktails and snacks with live music |
| Entertainment: | astor@Cinema Lounge: Experience the latest movies from comfortable lounge sofas Komödie im Bayerischen Hof: Our very own theatre Night Club: One of the best Jazz Clubs in town |
| Wellness: | Blue Spa: Unique wellness area (1,300 sqm) spread over the roofs of Munich, designed by Andrée Putman. Pool with sliding glass roof, steam bath, sauna, solarium, sun terrace, fitness studio Extensive range of treatments and massages, Beauty-Center and hair dresser in-house |
| Function rooms: | 40 air-conditioned banqueting and meeting rooms Various sizes from 17 up to 1,700 sqm, capacities from 10 to 2,500 guests Ballroom ensemble: 1,700 sqm / 18,228.7 sqft in Art déco style with sliding glass roof Palais Montgelas: Various classical salons including the splendid Königssaal (King's hall) astor@Cinema Lounge: 38 seats, for presentations, film preview screenings and private events Roofgarden with Live-cooking-stations and Roofgarden Lounge with bar and open fireplace Blue Spa Bar & Lounge with wintergarden and open fireplace as well as terrace with a panoramic view |
| Service: | 24h room service, business centre, concierge service, hotel shop, gift voucher service, shopping arcade and art gallery, Sixt car rental, underground car park with sentinel, valet service |
| Location: | Situated within the old city centre of Munich Famous attractions nearby (Frauenkirche, Viktualien market, Opera, famous museums, The Residenz and Hofgarten) Next to the pedestrian zone with exclusive shopping opportunities, within the banking and business district |
| Connections: | International airport Franz Josef Strauss: 35 km Main train station: 1 km Munich Messe (exhibition and trade fair centre): 8 km ICM International Congress Centre Munich: 8 km The Olympic Park: 5 km Allianz Arena (soccer stadium): 10 km |

| | |
|--|--|
| Other establishment run by the Volkhardt family: | Volkhardts Wein, Kaflerstraße 15, D-81241 Munich, Germany Phone +49 89.82 92 12-15, Fax +49 89.82 92 12-23 www.volkhardts.de, info@volkhardts.de |
|--|--|

