

**Hotel Bayerischer Hof**

Promenadeplatz 2-6  
80333 Munich, Germany

P.O.Box 100 253  
80076 Munich, Germany

Phone +49 89.21 20 - 0  
Fax +49 89.21 20 - 906

[www.bayerischerhof.de](http://www.bayerischerhof.de)  
[info@bayerischerhof.de](mailto:info@bayerischerhof.de)



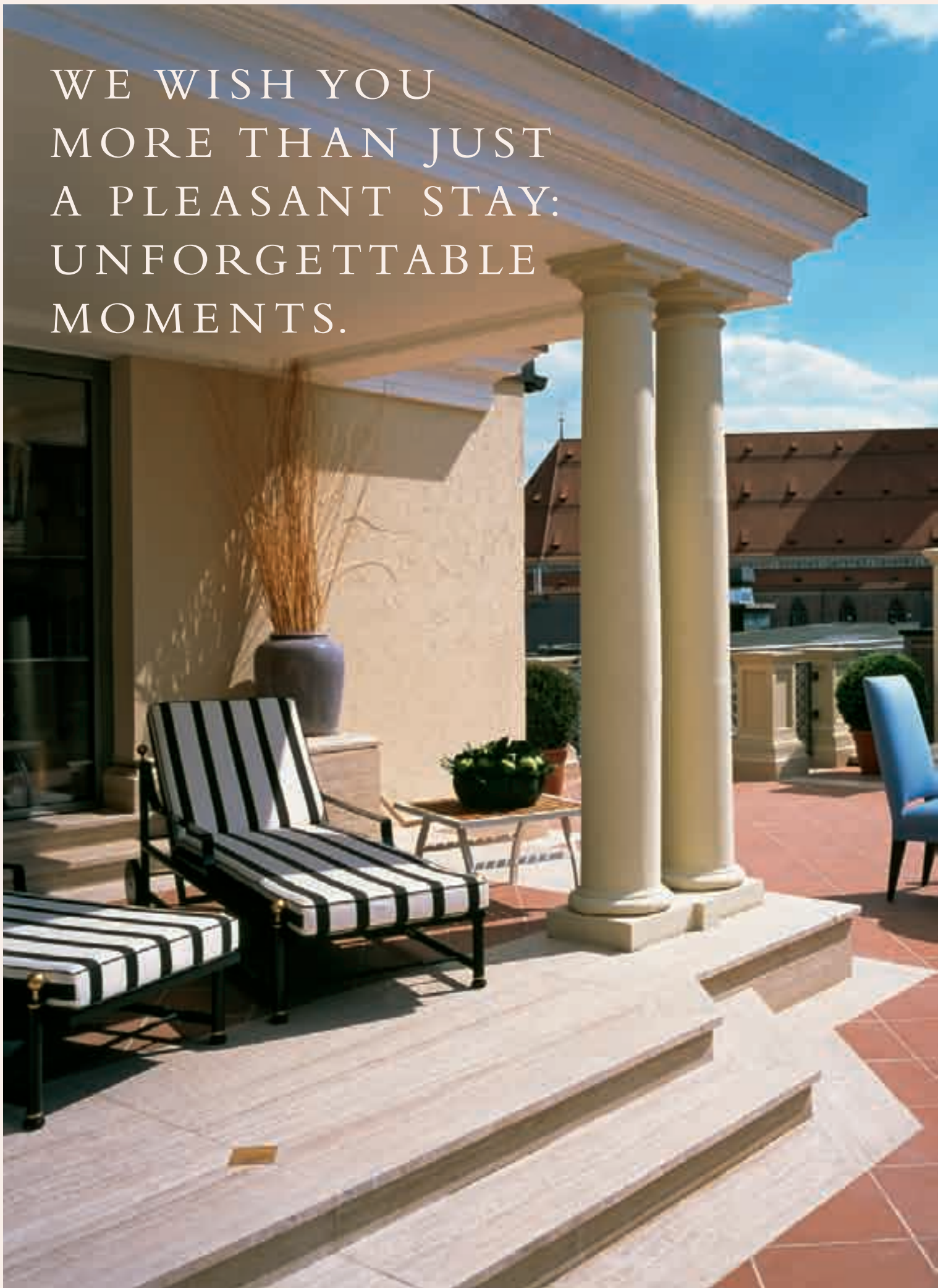
705

VERY PRIVATE.  
OUR SUITES.



BAYERISCHER HOF  
MUNICH

WE WISH YOU  
MORE THAN JUST  
A PLEASANT STAY:  
UNFORGETTABLE  
MOMENTS.






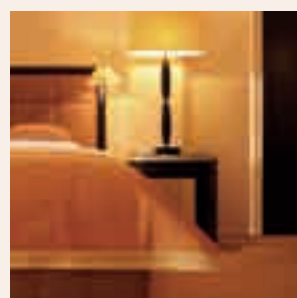
A high degree of personal privacy is not something one usually associates with a hotel. Fortunately, the Bayerischer Hof is no normal hotel and a suite here is much more than just a large room. Think of it as your home during your stay in Munich. Since 1841, our privately managed residence has been valued internationally for its luxurious atmosphere and its amiable, highly personal service. Enjoy one of our 60 suites set in the heart of Munich and experience a fascinating blend of history and modern comforts.

We look forward to welcoming you.



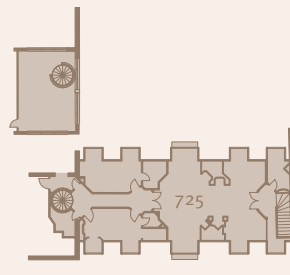


YOU ARE ONE OF  
THOSE PEOPLE WHO  
EXPECT MORE.  
SO WHY SHOULDN'T  
YOU GET IT?



## PANORAMA FLOOR

From the moment you step across the threshold onto the 7th floor, it's immediately clear: the Panorama Floor has been created for guests who place great value on having their own, very personal space. To ensure you remain undisturbed, a private room complex is at your disposal. Here, in surroundings designed by Count Siegward Pilati and comprising generously dimensioned suites and exclusive bedrooms, the highest levels of luxury come as standard. The Panorama Floor consists of three two-bedroom suites and two three-bedroom suites that can be flexibly extended to create a suite of up to six bedrooms with a separate anteroom. Elegant bathrooms, romantic fireplaces and protected roof terraces with breathtaking views invite you to linger. There's simply nothing that hasn't been thought of to guarantee you a relaxing stay. Welcome to the best that Munich high life has to offer.



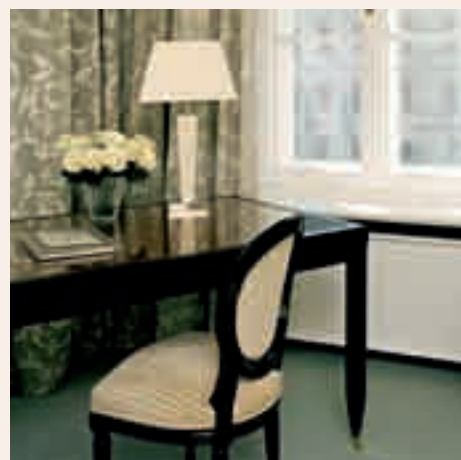
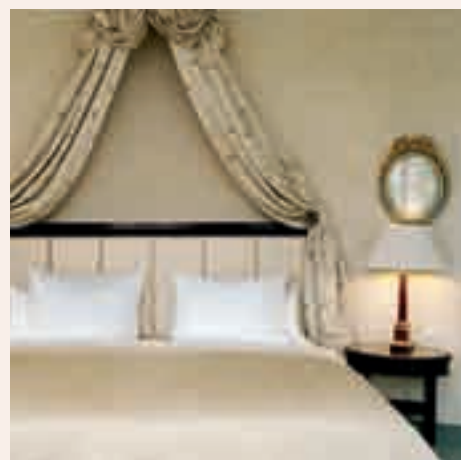
- Suite 705 101 sq. m., two-bedroom, penthouse-style suite with gallery bedroom and additional bedroom, living room, dining area with kitchenette, 78 sq. m. roof terrace, private access to the spa area, whirlpool, steam shower, open fireplace, can be combined to form a six-bedroom suite (total floor space 266 sq. m.)
- Suite 759 103 sq. m., can be combined to form a three-bedroom suite (total floor space 155 sq. m.), for details see Themed Suites
- Suite 770 106 sq. m., suite with free-standing, open fireplace, bar, living and dining area, steam shower, roof terrace, can be combined to form a three-bedroom suite
- Suite 725 130 sq. m., two-bedroom tower suite with fully glazed bedroom, living room, bedroom with large desk, bathroom, whirlpool and steam shower





A photograph of a grand, ornate chandelier hanging from a high ceiling in a luxurious hall. The chandelier is large and multi-tiered, with many small lights and intricate metalwork. The ceiling is decorated with a large, ornate, circular medallion. The walls are also decorated with intricate carvings and moldings. The overall atmosphere is one of elegance and grandeur.

PRINCESSES, KINGS AND  
EMPERORS HAVE STAYED  
HERE. TAKE OUR WORD  
FOR IT: YOU'LL BE JUST  
AS WELCOME.



# PALAIS MONTGELAS

Regardless of who stays with us, all our guests can look forward to maximum comfort and discrete service. Anyone wishing to add to that a rather special atmosphere should choose one of the suites in the Palais Montgelas. This wing adjacent to the Bayerischer Hof was constructed in 1811 in a classical architectural style. Here, surrounded by historic wood-panelled walls and precious antiques, you can live like a prince, or even a king. Its rooms, steeped in history – Elector Maximilian III was crowned here, for example – will fulfil your desire for royal seclusion and every modern comfort. Lifts whisk you directly to the underground garage and a separate kitchen is at your disposal. There are various ways of configuring suites – including the entire third floor, where you can enjoy a stay in Europe's largest suite, with a full 584.55 square metres of floor space and its very own entry in the Guinness Book of Records.



A Inner courtyard  
B Passage to the main tract

Suite 32 85 sq. m., kitchenette, circular bathtub, can be combined with other rooms to form a two- or three-bedroom suite and optionally with the entire third floor, view over the “Promenadeplatz”

Suite 35 89 sq. m., corner suite, view over the “Promenadeplatz”, large bathroom with seat and rain shower, 67" flatscreen, can be combined with other rooms to form a two- or three-bedroom suite and optionally with the entire third floor

Suite 43 83 sq. m., can be combined with other rooms to form a two- or three-bedroom suite (total floor space 185 sq. m.) or with the entire floor

Suite 45 68 sq. m., view onto the verdant inner courtyard, can be combined with the entire floor

Suite 49 93 sq. m., view onto the verdant inner courtyard, whirlpool, open fireplace, can be combined to form a two-bedroom suite or with the entire floor

Total floor space of 3rd and 4th floor is 584.55 sq. m. each.

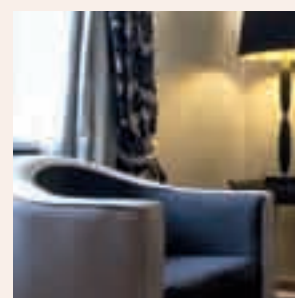
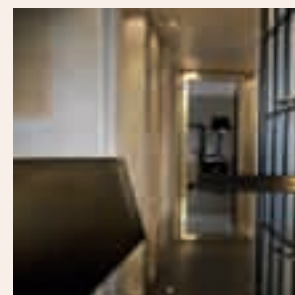
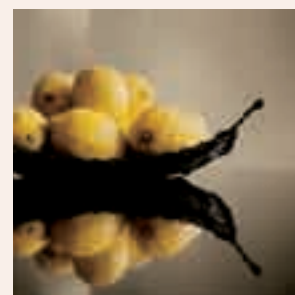








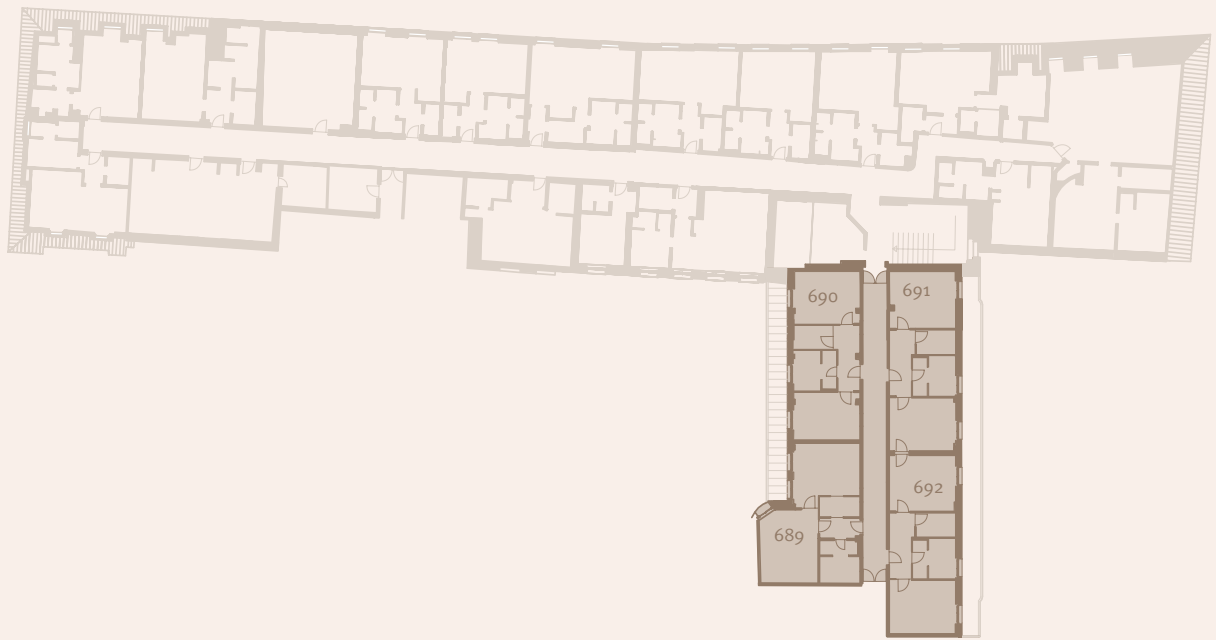
MUNICH OFFERS LOTS OF  
TOURIST ATTRACTIONS.  
YOU CAN EVEN SPEND THE  
NIGHT IN THIS ONE.



## MODERN SUITES

Among all the historic and modern buildings in the city, our hotel has itself become a reason to visit Munich. This is hardly surprising when, since the times of King Ludwig I, hospitality, comfort and outstanding architecture have been combined and renewed harmoniously. A stunning example of this are our modern suites. Here, you are met by a combination of subtle design, stylish clarity and comfortable interiors.

Designed by Count Siegward Pilati in pleasant shades such as pearl grey and taupe, the rooms ooze luxurious elegance. At the same time, your senses are wowed by precious materials, trimmed upholstery and decorative elements. Do you appreciate contemporary luxury that creates an irresistible ambience by skilfully combining discretion and opulence? Then our modern suites are simply perfect for you.



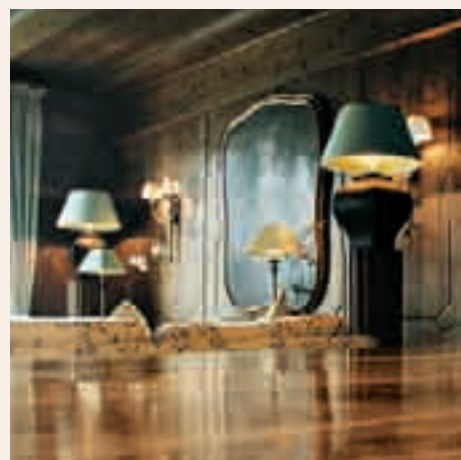
- |           |   |
|-----------|---|
| Suite 689 | 49 sq. m., view onto the inner courtyard, corner suite, living room, rain shower                            |
| Suite 690 | 44 sq. m., view onto the inner courtyard, corner suite, living room, rain shower                            |
| Suite 691 | 47 sq. m., situated on inner courtyard, living room, rain shower, can optionally be combined with Suite 692 |
| Suite 692 | 45 sq. m., situated on inner courtyard, living room, rain shower, can optionally be combined with Suite 691 |







ALL GRAND HOTELS WILL  
PROMISE YOU CERTAIN  
LEVELS OF SERVICE.  
BUT WE OFFER A WHOLE  
LOT MORE.



## THEMED SUITES

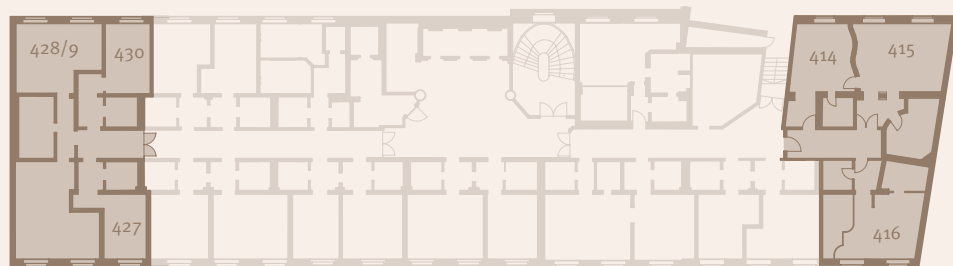
Today Paris, tomorrow New York, the day after the South Seas and then off to the mountains – what sounds like a pretty hectic schedule is in fact a description of the interior design of our suites. Experience a varied lifestyle – right here in the centre of Munich. Fall in love with the unique surroundings created by, among others, Oscar prize-winning set designer Rolf Zehetbauer. Settings that will not only transport you to another world and another time but also surprise you with a wonderfully relaxed ambience. Allow yourself free rein to choose between French art deco flair or fine New York-style woods and precious materials. Take a bath on glittering sea sands or return to an original Alpine ambience. The wide world or Munich flair? Whatever you opt for, you will find it right here with us. In a place of unlimited possibilities, Hawaii and Bavaria are next door to one another.

## 5th Floor



**A** Passage to Palais Montgelas

## 4th Floor



Suite 328  
Suite 428

Munich Suites, 85 sq. m., lounge with view over the “Promenadeplatz”, wood-panelled living room, dining area, bedroom featuring four-poster bed, can be combined to form a two-bedroom suite, on the 4th floor to form a three-bedroom suite

Suite 525

5th Avenue, 114 sq. m., living room with large double door to the bedroom, decorated with elegant silk wallpaper, large dining table, whirlpool, view over the “Promenadeplatz”, can be combined to form a three-bedroom suite (total floor space 174 sq. m.)

Suite 414  
to 416

Paris Suite, 139 sq. m., two-bedroom suite in the style of late 19th-century Paris, entrance designed as a street scene, art nouveau-style fountains, Montgolfier bar in the living room

Suite 535

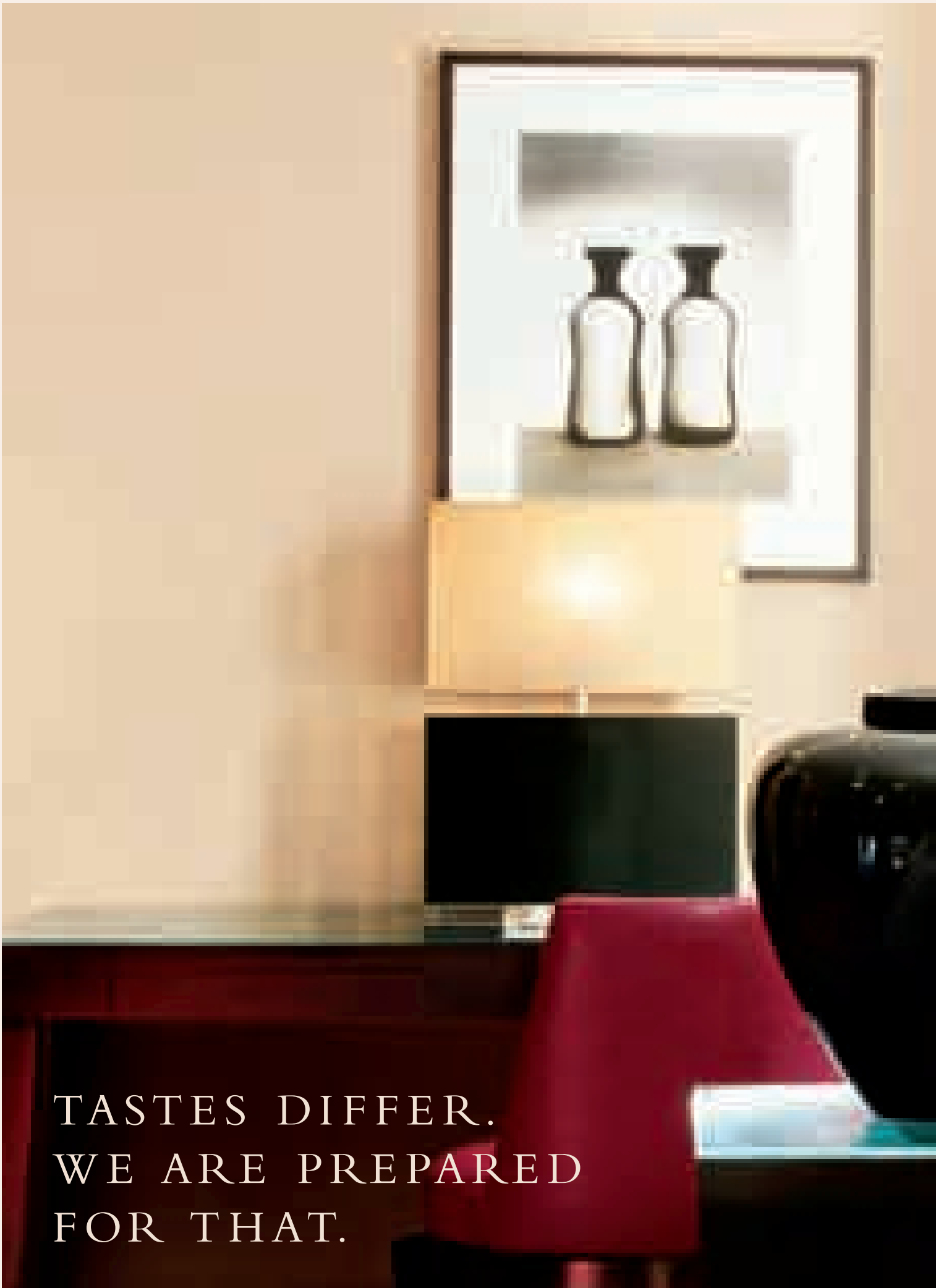
Paradise Island, 130 sq. m., bamboo wood decoration in all rooms, living room with eating bar, glass floor in bathroom, canopy bed

Suite 759

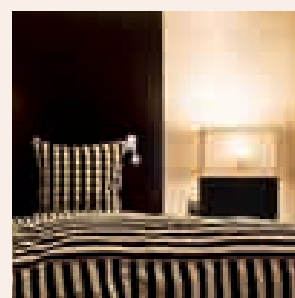
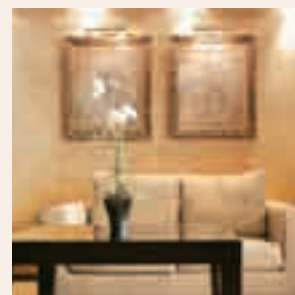
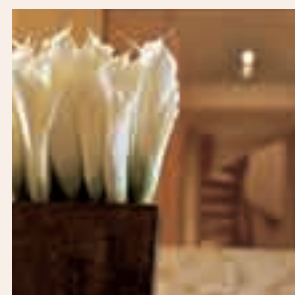
103 sq. m., classic Munich-style suite, dining area, French balcony, can be combined with additional rooms to form a two- or three-bedroom suite (total floor space 155 sq. m.), see also Panorama Floor floor plan







TASTES DIFFER.  
WE ARE PREPARED  
FOR THAT.



## JUNIOR SUITES

You don't have much time for monotony? Then let us invite you to try one of our 42 junior suites, all of them entirely different. After all, why would you want to live like other guests when your tastes and personal needs are entirely your own? Exactly. So enjoy the unmistakably personal atmosphere that pervades our privately run hotel. Choose between romantic Laura Ashley rooms, fascinating contrasts in our Cosmopolitan R&B junior suites, the charm of African colonial style or perhaps the discreet luxury created by the renowned architect Count Siegward Pilati. What's more, room-connecting opportunities are also offered here, making it possible for you to extend your private refuge in just the way you want during your stay in Munich.



5th Floor



2nd Floor

- |           |  |
|-----------|--|
| Suite 290 | 38 sq. m., view onto the inner courtyard, large seating area with bed settee, rain shower                                |
| Suite 291 | 38 sq. m., view onto the inner courtyard, large seating area with bed settee, floor-length window, rain shower           |
| Suite 579 | 46 sq. m., view onto the inner courtyard, desk, chaise lounge, bathroom with sand-coloured sawn marble and amber mosaics |

Just a sample of our many junior suites.







First opened:	1841
Total rooms:	345
Of which suites and junior suites:	60
Suite facilities:	DVD player, multimedia TV with over 380 international channels, Pay TV, stereo system, high-speed Internet access via WLAN/LAN
Internet:	360° round tour through the suites at <a href="http://www.bayerischerhof.de">www.bayerischerhof.de</a>
Meeting rooms:.	40, sizes: 17 to 1700 sq. m, Capacities: 10 to 2500 persons
Restaurants:	Atelier with Privé and Silent Garden, Blue Spa Lounge with open fireplace and terrace (barbecue in summer, Polar Bar in winter), Garden with Garden Salon and sun terrace, Palais Keller, Trader Vic's
Bars:	Blue Spa Bar, falk's Bar, Menehune Bar, Night Club Bar, Piano Bar, Trader Vic's Bar, Doggy Bar
Entertainment:	Cinema Lounge, "Komödie im Bayerischen Hof", Night Club, Piano Bar
Wellness:	1300 sq. m. Blue Spa with pool (6.5 x 14.5 m), roof opens, Beauty-Centre, hair salon, steam bath, fitness studio, sauna, solarium, sun terraces, extensive selection of spa treatments
Service:	Business centre, concierge service, direct access from underground car park, limousine service, personnel shopping on request, Reiseland travel agency, Sixt car rental on premises, 24-hour room service, private kitchen use on request
Underground car parking:	24-hour surveillance
Shops/boutiques:	Antiquities Urban, Bonpoint, Cute Fashion, friendly hunting (cashmere fashion), Gabriele Griem (fashion), Galerie Jeanne, Galerie Schüller, Giovanni Raspini (silver jewellery and home accessories), hotel shop, Juwelier Möller 1856, L'Atelier Parmigiani, Maendler man & women, Nymphenburger porcelain, Büttenpapierfabrik Gmund (stationery), Stephen Hoffmann photo gallery, Stancsics chocolates, Uhrwald
Connections:	Munich International Airport Franz Josef Strauss 35 km (approx. 45 min.), Main train station 1 km (approx. 5 min.), ICM International Congress Centre Munich and Munich Messe (convention centre) 8 km (approx. 15 min.), The Olympic Park Munich 5 km (approx. 10 min.), Allianz Arena (football stadium) 10 km (approx. 20 min.)