

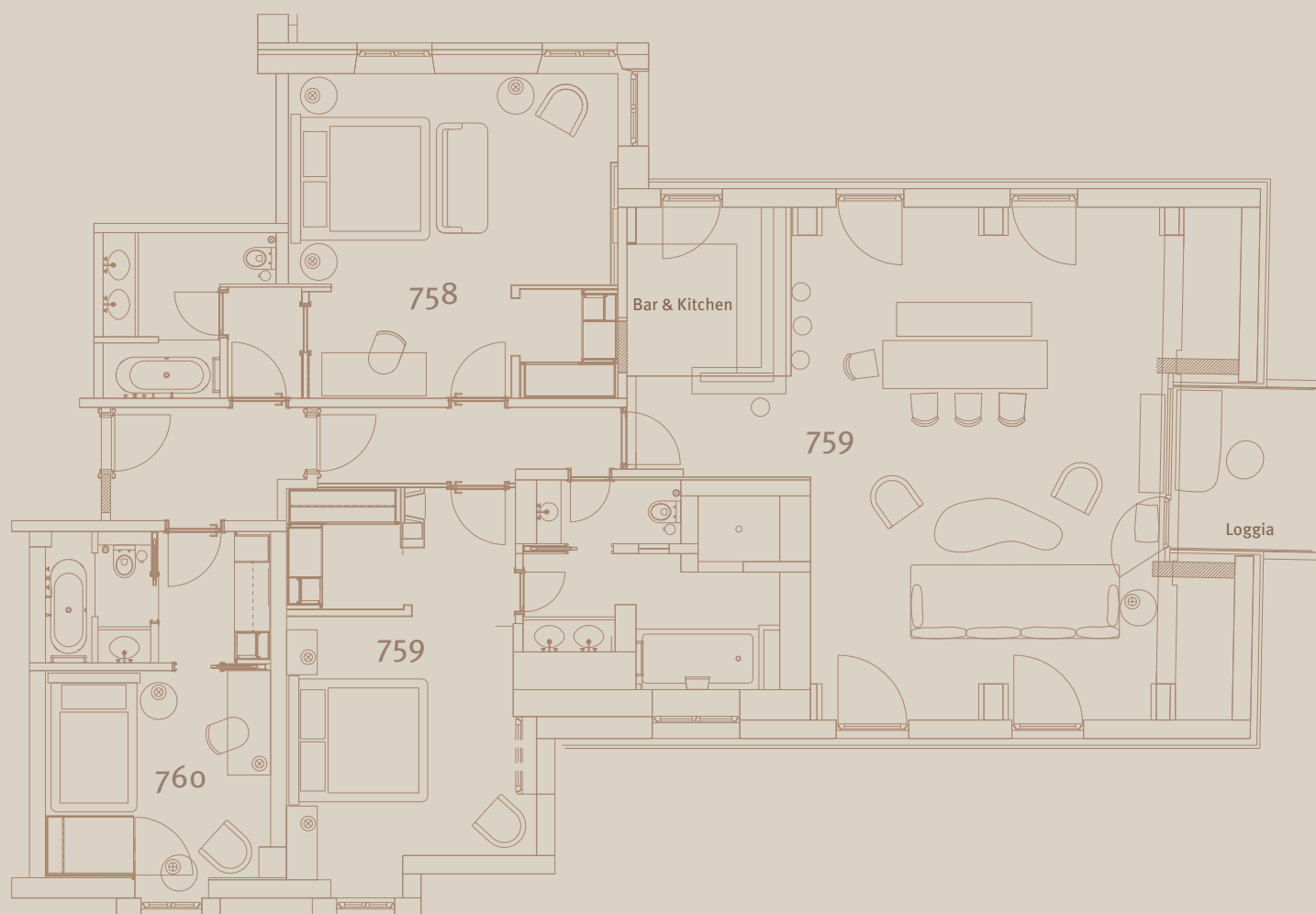


## PANORAMA SUITE 7

Discover the exquisite suite on the seventh floor, designed by Axel Vervoordt. On a generous 110 square metres, including an inviting loggia with a panoramic view over Munich, you will find a room that impresses with its discreet and understated design in light natural and earthy tones. Designed in the ambience of a private appartements, the suite offers a bar area with an open-plan kitchen and a spacious dining table for eight people. Each piece of furniture is unique and has been reworked with artistic skill to create a harmonious living landscape. The suite can be extended to a two- or three-bedroom suite of up to 166 square metres. All bedrooms are accessible via separate entrances.



BAYERISCHER HOF



## 7<sup>th</sup> Floor

Suite / Room	Area in square meters	Features	Extension
758	36	Desk, seating, carpeted floor, marble bathroom with double washbasin, bathtub	Can be combined into a two-bedroom suite with 759
759	110	Living room with seating and dining area for up to 8 people, 18 <sup>th</sup> century oak flooring, open-plan kitchen with integrated bar, marble bathroom with double washbasin, bathtub, separate rain shower and a loggia with seating area	Can be combined into a Two-Bedroom Suite with 758 or a Three-Bedroom Suite with 758 and 760
760	20	Alcove bed, seating area, desk, carpeted floor, marble bathroom with single washbasin and bathtub	Can be combined into a three-bedroom suite with 758 and 759

